

www.eddies.com



Kupo is a strong, durable and versatile tension pole system that does not require permanent fixing. It can be used in floor to ceiling installations as well as adapted for freestanding applications.



198600 gyro-pole. Height extends from 82½" to 145½" Silver.



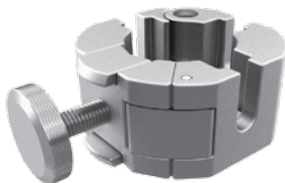
198601 replacement pad. White rubber, replacement pad for top of the gyro-pole.



198620 disc base. Steel base for gyro-pole 19" diameter. Silver.



198619 suspended ceiling adapter. Attaches gyro-pole to typical suspended type ceilings. Silver



198607 kupo donut (3 way joint). Clamps onto gyro-pole and attaches to three accessories. Silver.

price at:	1	6	12
198600 gyro-pole	142.00	134.90	127.80
198601 replacement pad	.90	.85	.80
198619 ceiling adapter	35.50	33.75	32.00
198620 steel base	149.90	142.40	134.90
198607 kupo donut	35.90	34.10	32.30



198605 square clip. Mounts onto kupo donut, vertical or horizontal orientation. Silver. 3½" h x 2" w



198608 tidy panel holder. Attaches panels or shelves to kupo donut. Locks at any angle. Accepts material up to 15/32" thick. Silver.



198606 sign frame rotating sidemount. Mounts onto two kupo donuts. Holds 22" w x 28" w graphics up to ¼" thick. Silver.



198609 rotating panel holder. Attaches panels or shelves to kupo donut. Locks at any angle. Accepts material up to 3/16" thick. Silver.

price at:	1	6	12
198605 square clip	28.35	26.90	25.50
198606 sign frame sidemount	189.90	180.40	170.90
198608 tidy panel holder	33.50	31.85	30.15
198609 rotating panel holder	31.00	29.45	27.90



Shelf with Bent Edges. Silver  
198602 30" l x 15" w shelf, max load 65 lbs  
198603 40" l x 15" w shelf, max load 55 lbs  
Attaches to rotating panel holder or tidy panel holder.



198610 square display shelf. Attaches to kupo donut. Measures 15" x 15" wide with a 14½" adjustable extension. Max load of 10 lbs. Silver.



198611 round display shelf. Attaches to kupo donut. Measures 13" diameter with a 11¾" adjustable extension. Max load of 10 lbs. Silver.

198618 "L" bracket shelf holder. Attaches to kupo donut. Use with wood shelves. 6¾" l x 1½" d x 1½" h Silver. (set of 2)



price at:	1	5	10
198602 30" shelf with bent edges	123.90	117.75	111.50
198603 40" shelf with bent edges	149.90	142.45	134.90

price at:	1	6	12
198610 square display shelf	122.90	116.75	110.60
198611 round display shelf	139.90	132.90	125.90

price at:	1	6	15
198618 "L" bracket shelf holder (set of 2)	43.60	41.40	39.25

toll free 1-877-433-3437



198617 straight arm.  
Attaches to kupo donut.  
Measures 1 3/8" diameter x 16" l with a  
maximum load of 9 lbs. Silver.



198604 U Hook.  
Attaches to kupo donut.  
1 3/4" depth. Silver.

price at:		1	6	12
198617	straight arm	47.15	44.80	42.45
198604	U Hook	16.90	16.05	15.20

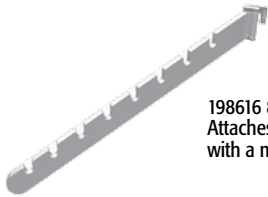


Rectangular Cross Bar. Attaches to two kupo donuts. Silver.

198612 41 3/4" l max load 55 lbs  
198613 31 1/2" l max load 55 lbs  
198614 24 1/2" l max load 65 lbs

Inquire about hangrail sizes for 48" and 24" wide Kupo sections.

198615 faceout.  
Attaches to crossbar. Silver.  
Measures 16 1/2" l with a maximum  
load of 6 1/2 lbs. Silver.



198616 8 slot waterfall.  
Attaches to crossbar. Silver. Measures 14 1/2" l  
with a maximum load of 6 1/2 lbs. Silver.

price at:		1	6	12
198612	41 3/4" cross bar	54.90	52.15	49.45
198613	31 1/2" cross bar	49.50	47.05	44.55
198614	24 1/2" cross bar	44.30	42.10	39.90
198615	faceout	39.90	37.90	36.70
198616	8 slot waterfall	39.90	37.90	36.70



198622 aluminum slatwall panel.  
Attaches to 4 kupo donuts. Silver.  
Measures 41 3/4" x 23 1/2"  
Accepts Eddie's slatwall accessories.

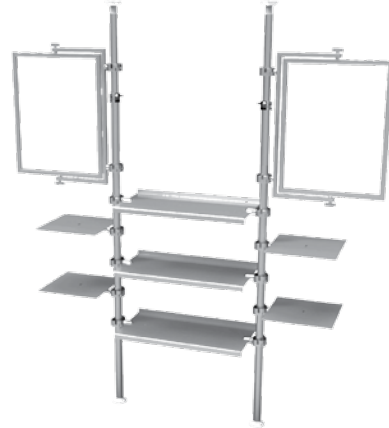
198621 bicycle fixture.  
Includes kupo donut. Silver.  
Measures 16 1/2" long with a  
maximum load of 33 lbs.

price at:		1	6	12
198621	bicycle fixture	119.90	113.90	107.90
198622	slatwall panel	259.90	246.90	233.90

**conventional kupo applications**

Here are a few examples of conventional kupo installations. If you require help, our sales staff can help you pick the right accessories to best suit your products and unique environment.

Product showcase display.



Promotional tower.



Bicycle display

Branded clothing merchandiser.

